

PCAR Products



F2 Remote Fob for Ferrari 360

No Programming Needed!

User's Guide

Designed and Engineered by PCAR Products

Congratulations on your new *F2*. In a few minutes you will be creating a working backup fob without in-car programming or PIN code. All you need is the *F2* and any fob currently paired to the car (the "donor"). The donor can be a slave or master.

Before getting started, take a minute to confirm that your donor fob locks and unlocks the car and that it is the same frequency as your *F2*. All US and Canadian - market cars use 315MHz fobs. Euro models usually operate at 433MHz. If you are unsure what frequency system you have, see FAQs or contact us for assistance.



Open the fob and note the serial number on the back of the circuit board. This number will be useful for ordering a replacement if your *F2* is ever lost or damaged.

CREATING YOUR *F2* BACKUP FOB

Creating your backup is super easy:

- **Move out of range of the car**¹
- Hold the donor in one hand and the *F2* in the other.
- Press and hold both buttons down.
- Release both buttons when the *F2*'s LED starts flashing².



Your *F2* is ready to use!



¹ If you create your backup close to the car you will set off the panic alarm. This is normal behavior when a fob is pressed for more than 3 seconds. If you trigger the alarm, reset it by pressing the fob for additional 3 seconds.

² Some aftermarket fobs (including the F2) turn off before the 10 second procedure completes. If you are creating a backup of one of these fobs, follow the above procedure except don't press the donor until the F2 has been pressed for at least 5 seconds.

USING YOUR F2

Once created, you can use either the F2 or the donor, but you must “select” the one you want to use before using it. To select a fob **press it 4 times near the car within 10 seconds**. The car will start responding to it and stop responding to the other one. To switch back, **press the other one 4 times near the car within 10 seconds**.

Think of the F2 and donor as a fob “tag team” – one is active, the other is on standby. Practice switching:

- Verify that the donor fob locks and unlocks the car.
- Press the button on the F2 4 times near the car.
- Verify that the F2 locks and unlocks the car.
- Press the donor fob 4 times near the car.
- Verify the donor locks and unlocks the car.



REMEMBER

The 4-press procedure is only needed to **SWITCH** fobs. Once you switch, the fob will lock and unlock the car with a single press until you switch to the other one.

INSTALLATION

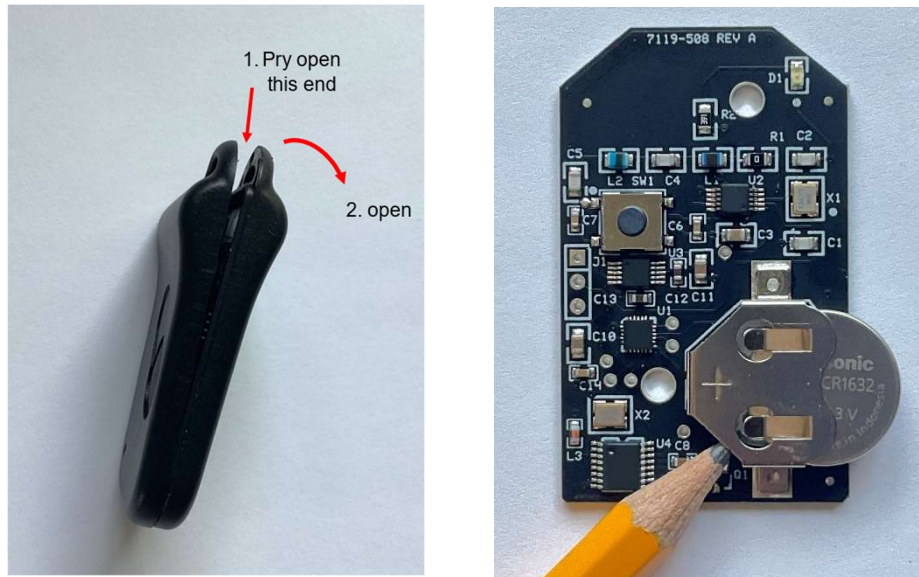
Your F2 comes in a mini fob case that is identical to the OEM case. If you prefer your OEM case, simply install the F2 circuit board in it:



BATTERY SERVICING

The F2 is powered by a CR1632 lithium coin cell. Good quality cells will typically have a 10-yr shelf-life and a capacity for over 30,000 operations. Replace only with name-brand cells such as Panasonic, Toshiba, Murata, Energizer, etc. (Lesser-known brands vary significantly in quality and capacity).

To replace the battery, remove the Phillips screw on the back, and use a fingernail to carefully pry the case open at the key ring end:



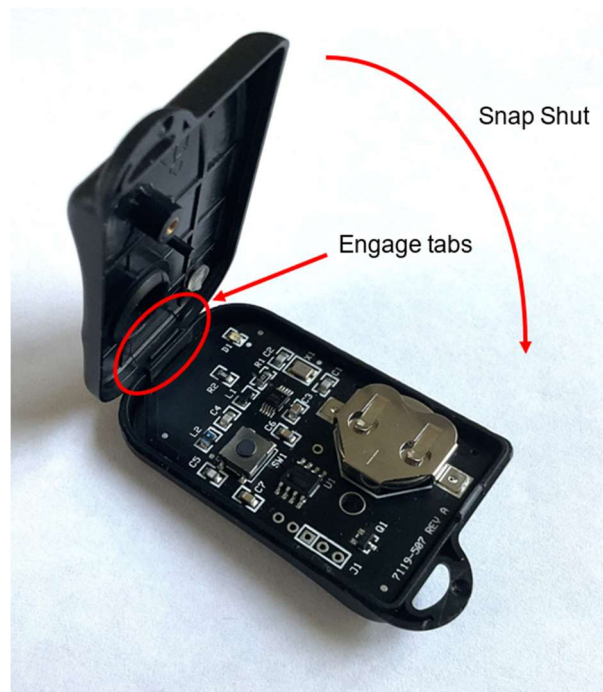
Remove the board from the case and push the battery out. This is a good time to inspect the battery contacts and clean if necessary. Install the new battery **+ side UP**.



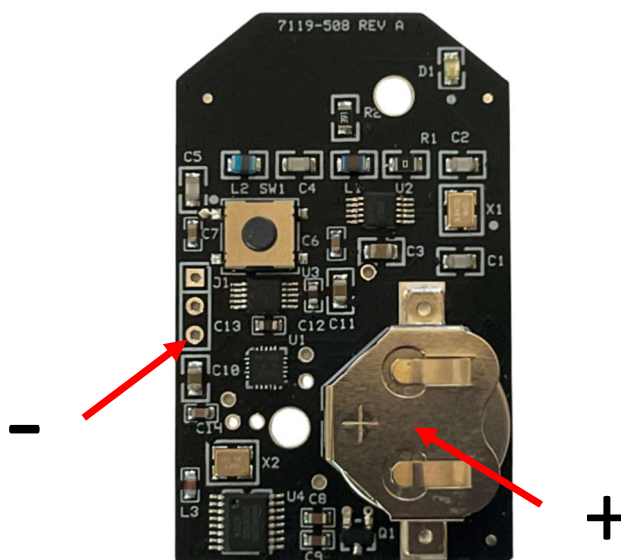
CAUTION

Installing the battery upside down can short it out and reduce capacity. Although the battery may still work, it is recommended to replace a reversed battery to ensure maximum life.

Before closing the case, make sure the LED illuminates when you press the button, then close the case by engaging the tabs, and snap shut. Re-install the screw.



If the LED does not illuminate, check that the battery is good and is installed "+" side up. Note: the fob will work down to 1.8 volts but should be replaced when it gets to 2.0 v. To measure the voltage, probe the key fob as illustrated below. Make the measurement while holding the button down.



FOB Range

A common question is, "How far away will my *F2* work?" This is difficult to answer because range depends on many factors: the fob, the immobilizer, how the fob is held, orientation to the vehicle, battery condition, surrounding environment, etc.

A better question is: "How does the *F2* compare to my current fob?" Based on user feedback, the *F2* consistently outperforms OEM fobs in range—and up to four times the distance of a popular aftermarket alternative. We'd love to hear how yours performs.

TROUBLESHOOTING

Q: When I tried to make my *F2* backup, the *F2* LED stayed on and never flashed.

A: Reasons:

1. The donor may not be transmitting or is transmitting a weak signal. Make sure the donor fob locks and unlocks the car. If the car doesn't respond to the donor, the *F2* won't either. Check the donor battery and contacts.
2. The donor may be transmitting at a different frequency than the *F2*. Make sure the donor fob frequency matches the frequency of your *F2* (see FAQs).
3. The donor could be an aftermarket fob that turns off before the backup can be completed. Follow the normal procedure but delay pressing the donor for at least 5 seconds after pressing the *F2*.

Q: When I made my *F2* backup, why did the car alarm go off?

A: This is the factory "Panic Function". It's triggered whenever a fob is pressed for more than 3 seconds to indicate the owner is in danger. To prevent this, make your backup away from the car. If the alarm does go off, reset it by pressing the donor fob for another 3 seconds.

Q: The backup procedure completed ok, but the *F2* doesn't lock or unlock the car.

A: Reasons:

1. The *F2* has not been "selected" as the active fob. **Press it 4 times near the car within 10 seconds and try again.** Make sure each press is at least 1 second long, and that all 4 presses complete within 10 seconds.
2. The donor that the *F2* was created from is not paired to the car. Retry with a fob that is paired to the car.
3. The *F2* battery is weak (see BATTERY SERVICING)

FAQs

Q: Which Ferraris is the F2 compatible with?

A: The F2 is backwards compatible with Ferrari 355, 360, 456, 550 and 575 models.

Q: Does the donor have to be a Ferrari OEM fob?

A: No. Any Ferrari-compatible fob for the above models operating at the same frequency as the F2 can be a donor, but it must currently be paired to the immobilizer.

Q: Can the F2 back up master and slave fobs?

A: Yes.

Q: After I create my F2 backup, can I change my mind and backup a different fob?

A: Yes. You can back up as many fobs as you like, even fobs paired to another car. Keep in mind that each time you create a backup, the F2 forgets the previous donor.

Q: If I have multiple fobs already paired to the car, will the “non-donor” fobs be affected by the F2?

A: No. Any other non-donor fobs paired to the car won't be affected by the F2 and will continue to function like they did before the F2 was added.

Q: Can I use the F2 to replace a fob that I take out of service?

A: Yes. Backup the fob you want to replace, then select the F2 using the 4-press procedure. If you take the donor out of service, the 4-press procedure will never be needed again.

Q: I currently have more than one fob paired to the car. Can I create an F2 backup for each one?

A: Yes. This means as many as 6 fobs can be paired to the car (3 donors, 3 F2's).

Q: If the fob I am using as my primary is lost or stops working, will the other one still work?

A: Yes. Just switch to the other fob by pressing it 4 times near the car.

Q: Can an F2 back up another F2?

A: Yes, with some caveats. If the F2 you want to use as a donor previously backed up another fob you are currently using, you will need to take that fob out of service. Then, instead of holding both buttons

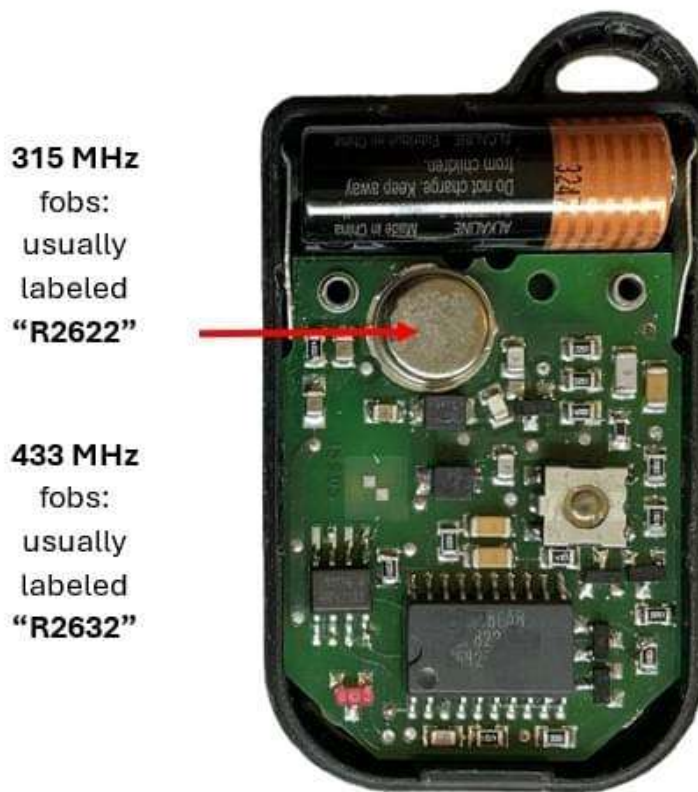
down for the 10 seconds, press and hold the new *F2* for at least 5 seconds BEFORE pressing the donor *F2*. See next FAQ for a better way to add multiple *F2*'s.

Q: Can I make more than one backup *F2* from a single donor?

A: If you would like to do this, let us know at time of purchase. We will provide two *F2*'s that can back up a single donor at no additional charge.

Q: How can I tell what frequency fob I need?

A: Check the label on the back of your fob. If it says "RK116" or "RKY116" you have a 315MHz system. If it says "RK114" or "RKY114" you have a 433MHz system. Some fobs don't have a label. If that's the case, open the fob and look at the label on the small metal can. On 315MHz fobs it will normally be labeled "R2622". The can on 433MHz fobs will normally be labeled "R2632". If you have any questions, let us know.



Determining fob frequency

Comments? Questions? Drop us a line: support@EZIMMOBLOCK.com. Or call: 860-271-1826